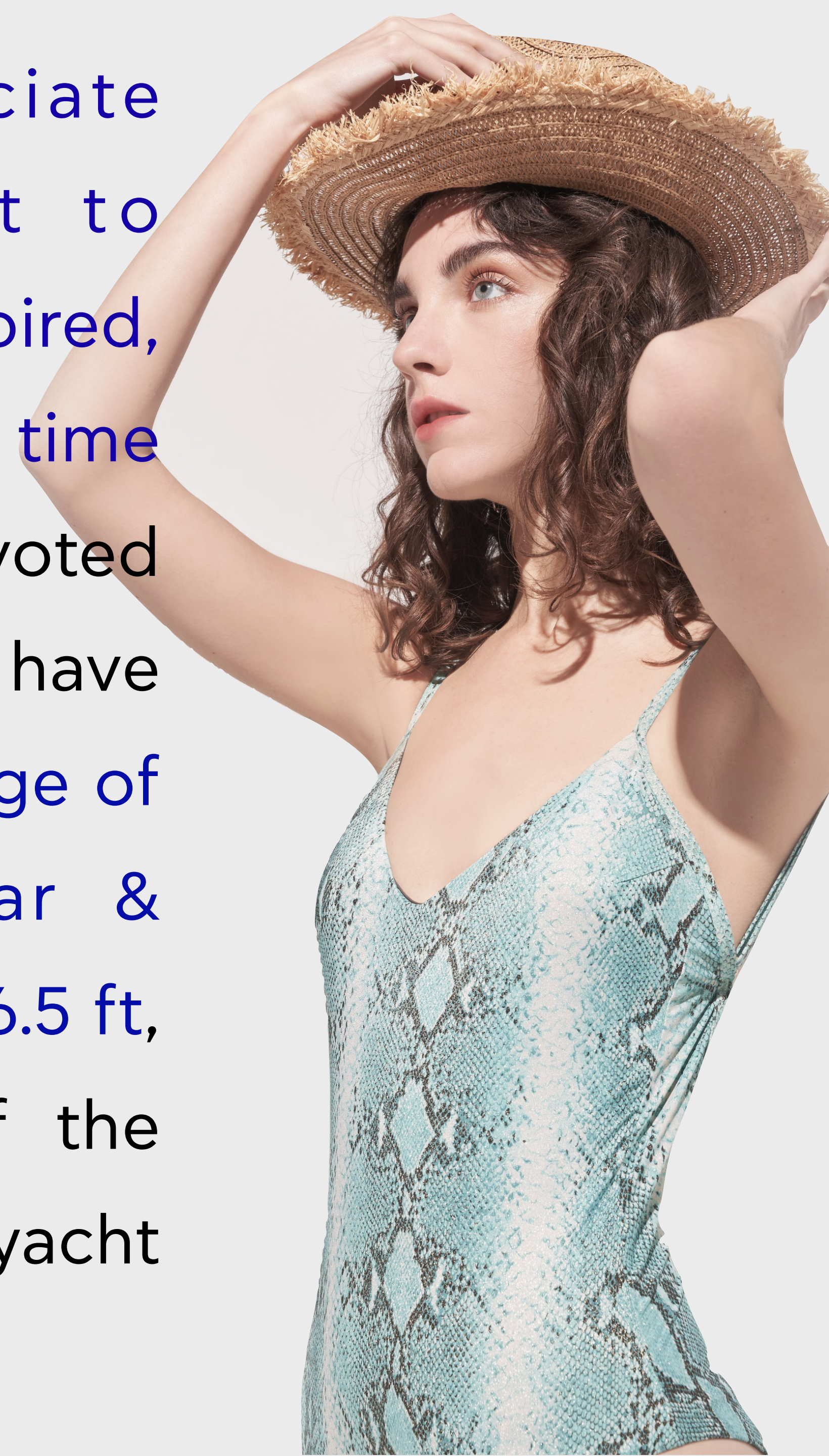


# D I O N E B L U E

**: the yachting specialists.**

We know the most exclusive way to explore Greece. We are specialized in yachting services, open to all travelers and free

spirits who appreciate privacy and want to experience a rare, inspired, and highly rewarding time in their own terms. Devoted to our mission, we have covered the entire range of yachts, from Axopar & Fjord, 37ft - 38ft, to 176.5 ft, that is the length of the "queen" of our mega-yacht fleet, Persephoni.



# The fleet

, starting with our favorite  
luxury “toys”...

## Eros + Ataraxia



- Year built:2021
- Builder: RockMarine
- Model: Rock36
- Length: 10.65 m
- Capacity: 10 persons
- Cabins: 1
- GPS chartplotter/sonar
- Simrad GO 9
- Simrad 9 inch GPS Plotter +transducer
- Audio System
- FUSION Apollo MS-RA770
- Bluetooth AM/FM Tuner & MP3 Player, 4 marine speakers
- Engine: 2 × Mercury Verado V8 300 HP
- Fuel: Gasoline
- Fuel capacity: 2 × 300 lt
- Cruising speed: 37 kn
- Max speed: 52 kn
- VHF
- Anchor windlass
- Bimini top
- Sun beds
- Fresh water shower, 120 lt
- Fridge
- Toilet



## The fleet

### Ribco Venom 44 Open Sterndrive

Our Ribco Venom 44 Open Sterndrive – 2 x 440HP Volvo Penta D6, equipped with 880hp from twin 440hp Volvo Penta D6 inboard engine, is the perfect boat for the lovers of comfort, luxury and adventure at the same time.

This rib, can get on planning cruise from 33 knots speed and able to deliver 50 knots top speed. Its custom design was inspired from the need of more spacious deck lay out for guests while anchored without compromising cruise and speed.

- Year: 2020
- Length: 13.5m
- Engine: 2 x 440HP Volvo Penta D6
- Speed: 50 knots
- Fuel Tank: 480 lt & 380 lt
- Water Tank: 100 lt
- Cruising: 28-38 knots
- Onboard Capacity Recommended: 9



Gallery slide-show

# The fleet

## 40 Technohull explorer

The Explorer 40 is yet another dream brought to life: A day boat that combines thrilling rides and outstanding seakeeping capabilities, with a spacious deck and generous lounging areas. In 40 feet that stay true to TECHNOHULL®'s high performance heritage and distinctive design, the extra space is what lies at the vessel's design core.

Featuring a hidden, yet spacious, cabin under the center console, she boasts the sharp look and the dynamic shape of a genuine top performance boat, offering a range of 250+ NM and revitalizing speeds over 80 knots, this ultimate day boat is poised to perform and allow you enjoy the sea from a spot-on perspective.

Comfortable seating arrangements from bow to stern, crafted with the highest quality upholstery and stitching patterns, afford for distinct social areas and different day and night use. The experience on board is further enhanced by the standard top quality entertainment system with JL speakers and amenities, such as a fridge and an espresso machine.

- Length in meters: 12.1
- Length in feet: 40
- Engines: 2 Fuel: Diesel
- Speed cruising: 42
- Speed top: 80
- Daytrip Passengers | Crew: 9 / 1
- Night Passengers | Crew: 2 / 1

**Cabins: 1 double bed + WC**



Gallery slide show

# The fleet

## Fjord 38 Open

An open experience awaits.

Fjord 38 open, is a high-power yacht that raises the bar when it comes to floating sport cabriolets. From its iconic T-top style feature of yacht construction to its sophisticated front window, this high-power yacht keeps your body in balance at high speeds and offers a gratifying amount of sunshade, thanks to the electric bimini top. As for the interior, it confirms its exceptional status featuring a combination of high tech materials and one of a kind aesthetics.

- Length in meters: 12
- Length in feet: 38
- Engines: Unleaded Fuel: 2
- Speed Cruising: -
- Speed top: 45
- Daytrip Passengers / Crew: 12P / -C



Gallery slide-show

# The fleet

## 40 Tesoro inboard

T40 is one of the most iconic models of its range. The exterior features a stern solarium that makes a massive sunbed with the dinette table conversion added to a big swim platform, while its sturdy roof pillars integrated into the bulwarks, make a single solid piece with the hull offering stability and extreme space on the deck.

The new hull windows, in addition to the cabin's skylight, fill the spacious interior of two cabins with natural light and ventilation. Its unique ambiance is enriched with exclusive details that promise an unforgettable experience.

- Length in meters: 12.36
- Length in feet: 40
- Engines: 2 Fuel: Diesel
- Speed cruising: 30
- Speed top: 45
- Daytrip Passengers | Crew: 10 / 2
- Night Passengers | Crew: 4 / 2

**Cabins: 2 (1 master | 1 twin)**



Gallery slide-show

# The fleet

## Baglietto 43 Feet

The thrill of a customized experience

No Baglietto yacht is the same, as each project born at the shipyard reflects a tailor made philosophy.

Offering the highest standards of quality, style and innovation, each Baglietto maintains an artisan approach that combines excellent materials with high customization for an exclusive, one of a kind experience.

Ride the waves of the Aegean and feel the thrill of a yacht built to live up to your wishes and expectations!

- Length in meters: 12
- Length in feet: 43
- Engines: 2 Fuel: Diesel
- Speed Cruising: 35
- Speed top: 29
- Daytrip Passengers / Crew:



Floor Plan

# The fleet

## Princess V65

If you are seeking the next level of luxury, explore the Princess V65.

This yacht encapsulates the sports motor yacht concept, featuring huge sun lounges, great walk-around side decks for accessibility and a saloon area with a sliding roof and a sliding door that unites the transforms the salon into an open area making it one with the outside deck. The V65 can accommodate up to 12 guests for a daily trip and up to 6 guests for an overnight stays in three beautifully appointed cabins. The interior features expansive use of glass, curved timbers and concealed lighting. Stretch out, read a book, have a snooze, grab some vitamin D or dry off in the sun after a swim, without entering the cockpit. It is perfect for an unimpeded view of the sunset or night sky as you can lounge back and swing around the anchor.

The V65 features a hydraulic platform that when lowered into the water the guests can become one with the beauty of the turquoise Greek waters. For those who prefer the shade whilst enjoying the sea breeze, the electric sunshade extends from the hardtop above the table of the deck. Back in the cockpit, the U-shaped seat for 8 comes with a well crafted table that converts to a full-size dining table when needed. Its well equipped with cockpit refrigerator.

A few steps lower, the galley is equipped with all necessary amenities to prepare gourmet meals. It features a state of the art entertainment system (Apple Airplay 2) along with free 5G internet for your convenience. Power comes from twin 1360HP MAN, twin turbo V12 engines.

- Length in meters: 20
- Length in feet: 65
- Engines: 2 Fuel: Diesel
- Speed Cruising: 34
- Speed top: 39
- Daytrip Passengers / Crew: 12P / 3- 4C
- Night Passengers / Crew: 6P / 3C



Gallery slide-show



# The fleet

## Mangusta 72

Sporty, elegant and a true beauty.

Mangusta is a wonderful blend of power, technology, and design. But she's so much more than just that.

With no compromises on safety, the finest quality vendors in all components, state of the art technology and unparalleled performance, this beauty will give you exactly what you are seeking.

Get your camera ready and make snapshots of the majestic scenery on board this sleek 72-foot sports yacht. Welcome up to 12 guests during the day and up to 7 for an overnight stay. The first thing you'll have to decide once on board this specious vessel, is which spot you'll choose to stretch out for sunbathing...the bow, the roof or the spacious aft deck? Speaking of space, the deck lounge offers plenty of seating for gatherings.

Compatible, state of the art entertainment systems (Apple Airplay 2) and free 5G internet add to the ambiance and cater for your convenience.

Her capacity for water toys and clever layout, make her the perfect yacht for a fun filled vacation on the water. She is a truly powerful joy ride, equipped with 2 Arneson drives that come from two 1300 HP MAN 12V engines.

- Length in meters: 22
- Length in feet: 72
- Engines: 2 Fuel: Diesel
- Speed Cruising: 24
- Speed top: 29
- Daytrip Passengers / Crew: 12P / 3- 4C
- Night Passengers / Crew: 7P / 3C



Gallery slide-show

# The fleet

## Ferretti 72

Love at first sight.

Luxury, power and style combined in one model with dynamic, flowing lines are a few of the features that first meet the eye.

Like a penthouse surrounded by the sea, this magnificent flybridge offers bright, airy accommodation, elegantly furnished with refined design. With external areas providing every conceivable comfort, there is an idyllic equilibrium between inside and out. Exclusiveness rules the waves. Spirited and seductive, the Ferretti Yacht 72 wins over your heart at the very first glance with her angular flair and striking lines that radiate majesty and style.

The two built-in windows with integrated portholes have a real streamlined verve, and their grand dimensions leave the interior awash with natural light and magnificent views. The main deck enhances the dynamism of the overall design: a single glazed expanse cuts through the entire superstructure to complement the fore-and-aft hard top over the raised helm station. Covered walls, floor-to-ceiling windows, billowy curtains and plenty of freestanding furnishings are the keys to a concept that is metropolitan yet liveable and ultra contemporary yet warm. A state of the art entertainment system comprised of Apple Airplay 2 technology is included along with free 5G internet connectivity.

- Length in meters: 22
- Length in feet: 72
- Engines: 2 Fuel: Diesel
- Speed Cruising: 26
- Speed top: 32
- Daytrip Passengers / Crew: 12+3P / 4C
- Night Passengers / Crew: 8+3P / 4C



Gallery slide-show

# The fleet

## Azimut 80

Azimut 80 stands out for its design, technology and materials at the service of the safety and comfort of the yacht passengers and crew, in the pursuit of a high-quality experience at sea.

The sun-pad in the bow is ideal for relaxing under the sun, while the living area behind the steering console of the flybridge is perfect for entertaining. The cockpit combines style and functionality with large and enveloping seats; a convivial place offering unforgettable moments.

Its characteristic large side windows allow light to reflect off the water and filter in to the interiors, enhancing the thrill of looking out to sea. The space opens onto the living room, designed for pure pleasure. The bow consists of a dining area, a fully equipped kitchen and a bright and sweeping staircase that leads below deck. The sophisticated sleeping area in the lower deck, and features soft, enveloping lines for utmost relaxation.

Charm and comfort are at home in every room, thanks to large wardrobes and luxurious en-suite bathrooms/spas. The master suite alongside three beautiful en-suite guest cabins, two with a double bed and one with two twin beds. Welcoming and comfortable  
Azimut is marked by great attention to detail.

- Length in meters: 25.20
- Length in feet: 80
- Engines: 2 Fuel: Diesel
- Speed cruising: 24
- Speed top: 28
- Daytrip Passengers | Crew: 12 / 3
- Night Passengers | Crew: 8 / 3

**Cabins: 4 (1 master | 1 VIP | 2 twin)**



Gallery slide show

## about yachting : Mega-Yachts

As luxury travel agents, with a strong presence in private yachting sector, we provide a range of indispensable yacht services in Greece and East Med. Specializing in large yachts, both private & charter, we offer a fully comprehensive range of services, handled by a well-trained and experienced team.

Having an agent at every port, DIONEBLUE experienced support team will respond to your needs quickly and professionally. Even before the arrival, the yacht will benefit from our itinerary and clearance advise tailored made to the Guests' lifestyle and local weather.

Our invaluable assistance continues for the duration of the trip, monitoring the itinerary day to day and generously offering our local knowledge, we ensure that Guests will enjoy an unforgettable experience.

# Mega-Yachts

## PERSEFONI

Persefoni Yacht, L.O.A: 53.8 m (176.5 ft) was built to ABS Classification and delivered in 2012 by the well-respected Italian shipyard Mariotti to interiors and exteriors by the award-winning Luca Dini Design.

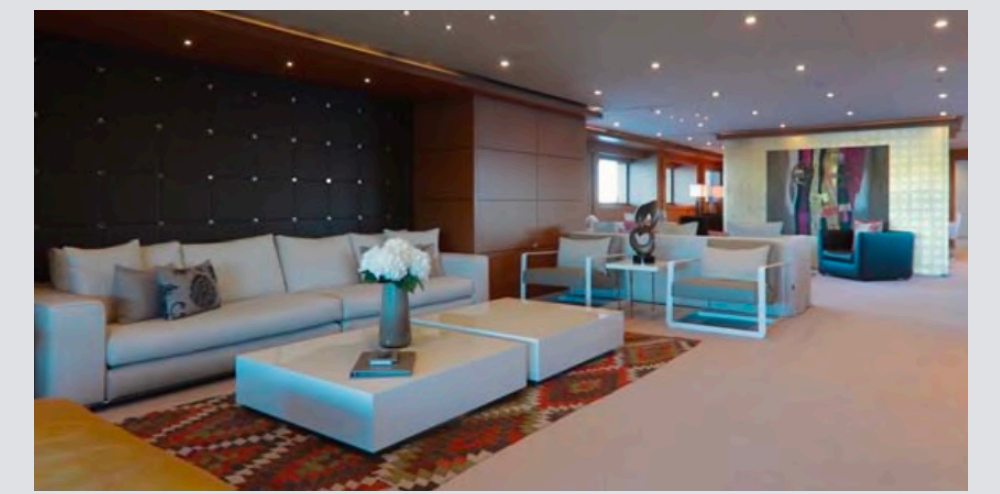
For a yacht of her length, she has very impressive volume of 928GT spread across four spacious decks and she is built to comply with the MCA LY2 Commercial Yacht Code.

Key features include a full-beam owner's suite on the main deck with fold-down glass balconies port and starboard, a private lounge and his-and-hers bathrooms. There is another fold-down glass balcony outside the lobby to starboard for guest boarding.

A huge sun deck has a jacuzzi, fully-equipped bar, two lounge areas and plenty more deck space besides. Her remarkable volume is also evident in the enormous main saloon with two lounge areas, a bar and formal dining for 12 guests. There is a full-beam sky lounge on the bridge deck with lounge, bar and gaming table, with al fresco dining and a lounge on the bridge deck aft.

She sleeps 12 guests in the owner's suite, a bridge deck VIP cabin and three double cabins plus a twin cabin on the lower deck. She also accommodates up to 14 crew.

A lower deck shell door to port conceals her 7m Castoldi jet tender and watertoy storage and her rescue tender deploys from the foredeck. She has four Naiad stabilisers for comfort underway and at anchor and twin 2,680hp Caterpillar engines, both with well under 3,000 hours logged, give her a top speed of 17kn, a cruising speed of 14kn and a transatlantic range of 5,000nm at 11kn.



# Mega-Yachts

## BARENTS

BARENTS yacht is a 164.00 ft long motor yacht monohull and spends the summer season in Greece. It was built by Benetti in 1999. A refit was done in 2021. The yacht layout features 6 cabins and accommodates 12 guests. The cabin arrangement is following: 1 king cabin, 1 queen cabin, 2 double cabins, 2 twin cabins, 2 pullman cabins.

The motor yacht features Engines: 2 x 2.226 hp MTU 12V396 TE94 Generators: 2 x 155 kw each Northern Light Generators Consumption: 400 ltrs/day engines .

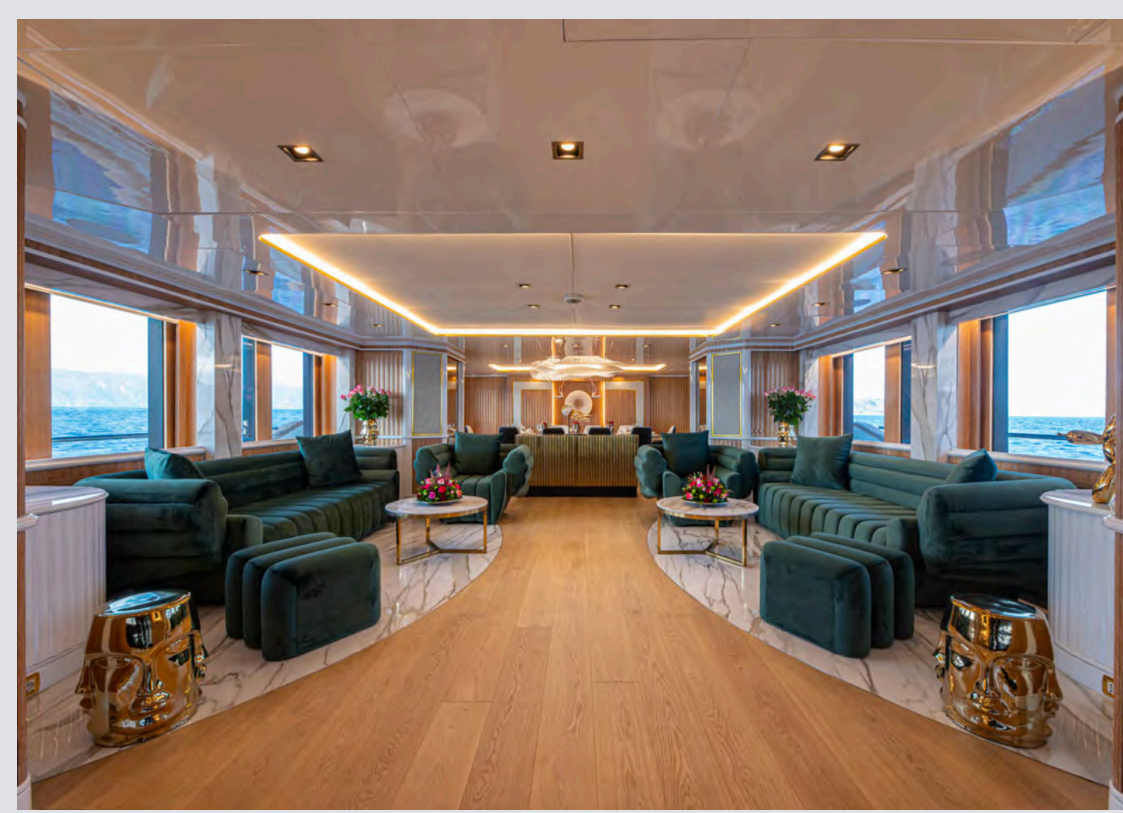
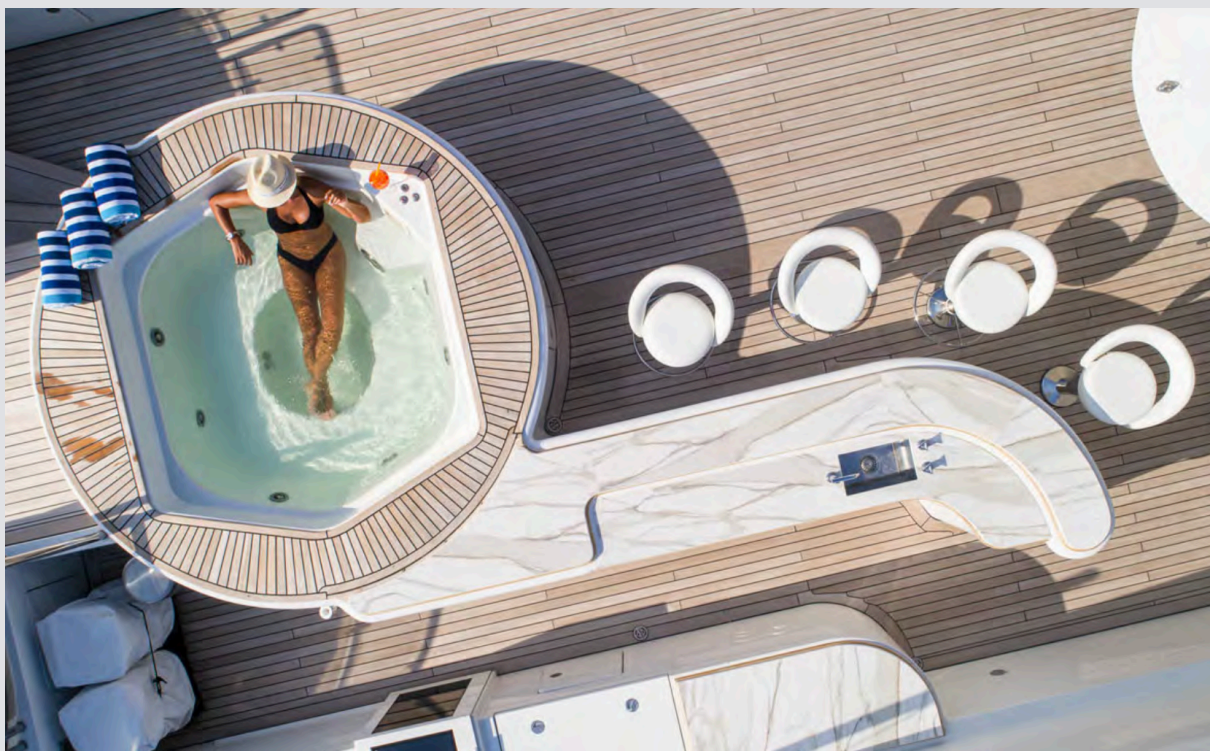
## ACCOMMODATION

1 x Full beam Master Suite located on the main deck featuring a king size bed  
1 x VIP Suite located on the upper deck with a Queen size bed  
2 x Double Staterooms located on the lower deck with a queen size bed  
2 x Twin Staterooms located on the lower deck with a Pullman berth each

All with en suite facilities

## CABIN BREAKDOWN

King Cabins: 1  
Queen Cabins: 1  
Double Cabins: 2  
Twin Cabins: 2  
Pulman Cabins: 2



**To experience the maximum of pleasure and the full “package of emotions” on board it is necessary to have solved important practical parts:**

- where to anchor
- where to eat
- where are the best fishmongers and delis for the chefs to buy local products

- how can be anything delivered by helicopter in a remote anchorage
- arrange a hard-to-get restaurant booking

**We appreciate local networks and we are a part of them, it is one way when you want to experience yachting as it deserves.**



**We have met the widest smiles on yacht decks, anchored in secluded coves of the Ionian and Aegean seas. They are people genuinely happy, deeply mindful and tuned in to the present.**